



Peru Mission

Hope *for a* Generation

CAMPAIGN FOR THE PERU MISSION
CHILDREN'S MINISTRY CENTER

There's not much in this world that is more vulnerable than a child, especially one growing up in the shanty towns and squalor of the developing world.



We believe the Lord is calling us to change the charted course for hundreds of children annually for His Glory. Please join us.



Meet Elina.

Yasumi and Elina Velazquez, live in the district of *La Esperanza* in Trujillo, Peru.

They are sisters, nine and four years old respectively. Their father is a drug addict who disappears for months at a time and contributes virtually nothing to their livelihood. Their mother, in an attempt to provide support, decided to leave her girls behind with an aunt while she works at a mine in the mountains a couple of days away, making minimum wage. She sends back a small amount of money each month to help buy food and basic necessities. The church shares rice, beans, and pasta to help with basic needs.

Yasumi and Elina's story is heartbreaking, but sadly is not unique in this poverty-stricken area of Peru. Many thousands of children in this city of more than one million live in very similar circumstances.

Writing a New Ending to the Story

Elina was fortunate enough this year to receive a scholarship to attend Peru Mission's Geneva School in Esperanza. Her experience there speaks to the impact of a stable education and the beautiful redemptive nature of the Gospel message. By her involvement and growth in this Christian environment, Elina is daily exposed to Jesus' love for her through the instruction of loving teachers. Not only is Elina being impacted, but her family also as they are welcomed into a loving Christian community.



Growing Up in Poverty

For those who survive past childhood, the poor nutrition, poor health care, and poor educational opportunities in their earliest years greatly reduces both the length and quality of the rest of their life. In addition, growing up without access to the Bible and stories of Jesus, stunts the development of their worldview in ways that leaves them spiritually hardened and statistically unlikely to ever believe the Gospel message, should they happen to hear it later in life.

Holistic Compassion Changes Everything

Peru Mission plans to help break the devastating cycle of urban poverty by building a ministry center for children in one of the poorest districts of Trujillo. Through an integrated approach that serves the social, physical and spiritual needs of each individual child, this center will provide holistic compassion and hope to some of the most vulnerable children in Peru.



Impacting a community in crisis.

Urban Poverty *by the numbers*

These are an average of the three target districts of La Esperanza, El Porvenir, and Huanchaco.

30% families
in poverty or
extreme poverty

1 in 10 children
facing chronic
malnutrition

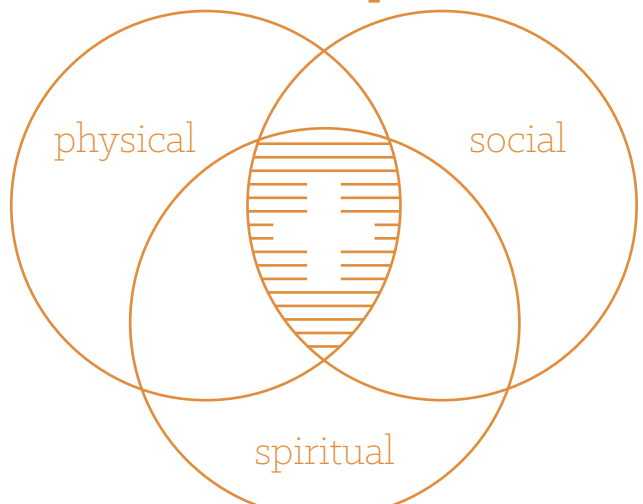
59% second graders
with unsatisfactory
reading scores

Hope is on the horizon.

By leveraging nearly two decades of ministry in country, Peru Mission will align its ministry resources and programs to support and sustain the Children's Ministry Center. We are convinced that the integration will compound the individual effect of each one. Ministry to children will be more effective while also strengthening each one of the other Peru Mission ministries. This will allow us to bring true, holistic compassion to hundreds of children and their families.

We are also convinced that this project is the most important that Peru Mission has ever been involved in! Jesus lovingly received children and blessed them when others thought that such would be a waste of his valuable time (Mt 19.13-14). He had harsh words for those who mistreated children (Mt 18.6). He claimed that our treatment of little ones in need, is in effect, our treatment of Him (Mt 25.45), and James tells us that caring for the vulnerable is of the essence of "pure and undefiled religion" (James 1.27). The needs cannot be ignored, and after many years of similar ministry on a smaller scale, we believe it is time to do this in a much more comprehensive way.

Children's Ministry Center: holistic compassion





How we holistically serve children

Physical

- Four nutritious meals per week at the ministry center, or in the case of the smallest children, in their homes.
- A complete health plan with our Bethesda Health Centers covering virtually all of their dental and health care needs.

Spiritual

- After-school tutoring from university students in Peru Mission's SUSANA college ministry.
- Participation in a Bible Club led by the same university students where they will play games, sing Bible songs, memorize Scripture, and learn important Bible lessons.
- Scholarship opportunities to attend Geneva Christian School.
- Receive Sunday morning breakfast, as well as participate in Sunday School and public worship at the ministry center led by two full-time pastors, along with other volunteers.

Social

- Attention in their homes by two full-time Christian social workers, working closely with two full-time pastors, and many other caring individuals to provide counseling and encouragement for the children and their families.
- Scholarship opportunities to attend Noah's Ark Summer Camp, as well as other summer activities including both sports and academic reinforcement programs.
- Weekly classes on marriage and family, health, and personal finances for parents and neighbors led by personnel from Bethesda, Sinergia Microfinance, and our pastoral staff.
- Personal financial counsel, business advice, and micro-loan opportunities for parents and family members from Sinergia Microfinance.
- Opportunities to participate in Christmas and Easter programs and other events throughout the year.

Community at the core.


Designed with an emphasis on creating community and engagement with children, the Children's Ministry Center will become a hub not just for the classroom programming but for flexible ministry space as we engage the surrounding community and ministries.

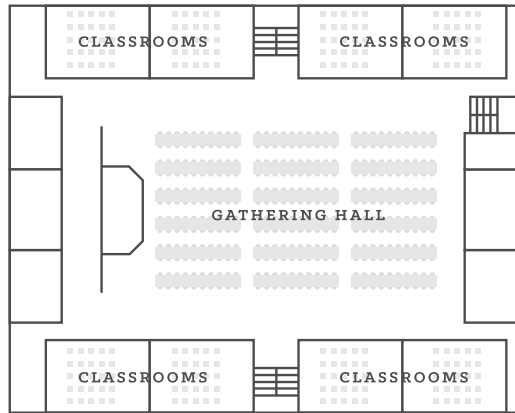
16
classrooms

accommodating
up to

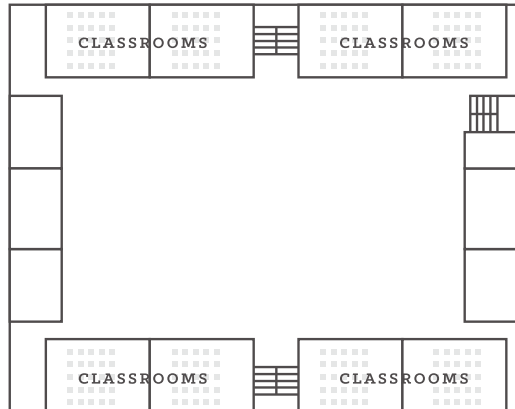
400
students

8
full-time ministry
staff members

1st floor 



2nd floor 



Bringing the Children's Ministry Center to Life

A project of such far-reaching impact cannot be carried by the sacrificial giving of few, but rather the cause compels us to join the generosity of many.

Peru Mission has successfully completed other capital campaign projects in-country, and has built a dependable network of trusted experts in the construction industry who provide quality work while conscientiously stewarding the gifts of our generous donors.

Construction Budget

Preliminary Works	\$19,050
Structures	\$206,187
Architecture	\$97,274
Electrical	\$27,591
Plumbing	\$10,047
Direct Cost	\$360,152
Unforeseen costs (10%)	\$36,015
Utility (8%)	\$28,812
Subtotal	\$424,980
Sales Tax (18%)	\$76,496
Total Construction Budget	\$501,476

In addition, we are actively raising funds for initial startup costs (\$42,000) and the first year of operational costs (\$15,000/mo.) Once operational, the Children's Ministry Center will be sustained by the ongoing monthly support of child sponsors. Estimated daily cost per child is less than \$1.50/day.



Exponential Kingdom investment.

Please join us in transforming the lives of literally thousands of children in Peru! By partnering with Peru Mission in this Children's Ministry Center you will not only be making a long term investment in the lives of 400 children who initially enroll in the program. Your partnership will also bear fruit in the lives of the thousands more who will participate in coming years in the same program. You will be investing in future church and civic leaders in a country that desperately needs them. You will be investing in the future of Bethesda Medical ministry, Sinergia Microfinance, Geneva Schools, SUSA university ministry, Noah's Ark Summer Camp, Areópago Seminary, and Peru Mission church planting. Through the integration of these ministries in the Children's Ministry Center your prayers and financial partnership will yield exponential returns for many years to come!





Your gift matters.

We need your help to meet our target groundbreaking date of January 2017. Below are some ways you can make a tangible impact by supporting this vital project.

\$25,000

will cover more than half of our equipment and setup costs

\$5,000

will cover all the chairs for the grand dining hall

\$15,000

will cover more than a month of our first year's operating expenses

\$2,500

will cover all the desks and chairs for the tutors (or it also pays for an industrial refrigerator/freezer)

\$10,000

will cover the set up costs for the kitchen

\$1,000

will cover one staff members office (computer, desk chairs, etc.)

Join us!

Your generosity and prayerful consideration will impact the lives of thousands of children. Make a gift today at www.perumission.org/give, or find other ways to give and connect with us, below:

Please mail support to:

CHRISTIAN MISSIONARY SOCIETY
P.O. BOX 25912
GREENVILLE, SC 29616
PHONE: 864.735.8267

Request a missionary to visit your church or small group, or for more information,

CONTACT, WES BAKER
PHONE: 769.218.4584
WESBAKER@PERUMISSION.ORG

About us

Jesus' ministry was marked with compassion to the weak and downtrodden. We strive to follow His lead through ministries proclaiming good news through word and deed.



Church Planting | Since 1999 Peru Mission has been planting churches that profess the ancient Biblical faith, worship God according to His Word, and live to carry out His mission in word and deed.



Medical Ministry | Since 2002 Bethesda Health clinics have sought to carry out the healing ministry of Jesus with special focus on the urban poor.



Christian Education | In 2015 Geneva School began to provide distinctively Christian education to children in the neighborhoods around our churches.



Microfinance | Since 2006 Stewardship Sinergia has been providing loans to small and micro businesses, along with instruction in the principles of Biblical stewardship and a Christian worldview.



Summer Camps | Since 2007 Noah's Ark Camp has provided fun, games, and Gospel-centered instruction for children from our churches and neighborhoods with the goal that they may know Jesus and live for Him in their home, school, and friendships.



University Ministry | Since 2002 Sociedad San Agustín has ministered on the numerous university campuses of Trujillo and Cajamarca. Through evangelism, discipleship, and incorporation into local churches students learn what it means to follow Christ in their vocations.



Theological Education | Since 2000 El Arepago has trained Peruvian pastors and church leaders to think Christianly, interpret the Bible faithfully, and live missionally in the world.



Meet Trujillo

Peru Mission is based in Trujillo - a city on the northern Peruvian coast of roughly one million inhabitants. Located in the dry, coastal desert, Trujillo is considered by many to be the second-most important city in Peru. Boasting eleven universities, and a deep-water port, Trujillo is the educational and economic capital of northern Peru.

Our Missionaries Based in Trujillo



Wes & Jami Baker, from Sutherland Springs and Seguin, Texas serve in church planting, theological education, and mission development.

Co-founded Peru Mission and serving in Peru since 2000.



Dale and Susan Ellison, from Pearl, Mississippi, serve in Christian education and medical ministry.

Serving in Peru since 2008.



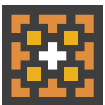
Stuart and Megumi Mills, from Zachary, Louisiana, serve in church planting, economic development and Christian education.

Serving in Peru since 2010.



Hermes and Alleen Tomás, from Trujillo, Peru and Jackson, Mississippi, serve in economic development, administration, and short-term teams.

Serving in Peru since 2009.



Peru Mission

PERUMISSION.ORG | 864.735.8267
P.O. BOX 25912 | GREENVILLE, SC 29616